



BYE BRA
2024

YOUR SECRET SOLUTION

Adhesive bras	P5
Tapes	P9
Pull-ups & Lifts	P15
Invisible shapewear light support	P21
Low back shapewear light support	P27
Lacy shapewear mid support	P33
Powermesh shapewear mid support	P37
Sculpting shapewear strong support	P41
Seamless shapewear strong support	P47
Waist control shapewear extra strong support	P55
Uni stretch	P59
Leak-proof underwear	P63
Bum lift & Underwear	P67
Natural rib	P73
Shaping tights	P77
Special solutions	P81
Marketing materials	P88

Your secret solution

Bye Bra is a specialist in shaping, strapless and backless solutions.

An inclusive collection

Our products are conceived to empower all women, unleashing their femininity in total safety; regardless of age, size, body type or skin tone. We offer a wide range of strapless and backless adhesive solutions, allowing any woman to wear any outfit in total comfort.

Most products range from A to E cup with specific items up to H. With 7 different shapewear lines (sizes ranging from S to XXL) with different shaping power/ support level (Light to Extra strong), we are able to satisfy the needs of every client. We also offer a wide range of nipple covers, underwear solutions and bra accessories.

A never out of stock collection

Our full collection is permanent and never out of stock, so retailers do not have to worry about end of season markdowns. Replenishments are fast and easy as all our products are available in stock in the Netherlands. Customer satisfaction is high and return rates are negligible, making Bye Bra the perfect complement to an existing lingerie, clothing, evening dress or bridal collection.

Certified & guaranteed quality

At Bye Bra, we put the health & safety of our customers at the core of our work. Our adhesive products are the safest available on the market. We work with world leading suppliers of medical tapes and glues: 3M and Henkel. All our products are dermatologically approved, non-irritating, hypoallergenic REACH (Registration, Evaluation, Authorization and Restriction of Chemicals) and PROP65 compliant.



Continuous improvement and Innovation

We continuously improve and extend our collection in order to give you every year higher performing, more discreet, nicer and more comfortable solutions. We do it by constantly monitoring the market for new fashion trends, re-searching innovative materials and designing & developing unique solutions that gives us a unique point of difference on the global market.

This year we are launching a new shapewear line (LOW BACK SHAPEWEAR) that features a very pronounced low back cut across all styles. We also developed a collection of incredibly smooth, but at the same time shaping lace (LACY SHAPEWEAR), that will convince even the more sceptical customer. Given the success of our waist control briefs and things last year, we increased the number of styles and created a full WAIST CONTROL SHAPEWEAR collection (Extra strong support).

We are also launching a super stretchy collection (UNISTRETCH) of one size fits all garments that will allow even the smaller store/shelf to stock a full range of products. You will also find NEW ADHESIVE BRAS & PULL-UPS, as well as additional sizes on existing solutions.

Our small contribution to a more sustainable future

Last year we started a path, introducing more sustainable materials (e.g. Ecovero Lenzig sustainable viscose) and recycled microfabric. We almost completely eliminated single use plastic from our packaging, by replacing single use plastic hangers with reusable ones made from recycled plastic. The plastic bags used to protect the garments are made from recycled plastic and most of the paper used in our packaging is also recycled.

We are part of different schemes in various countries, where we offset monetarily the packaging and product impact that we are unable to mitigate via our supply chain. We also do our best to make sure we have ethical partners throughout our entire supply chain. We are not perfect, but we try to do our part...



ADHESIVE
BRAS

Model wearing:
Diva bra - C cup
Low back mid waist short - M

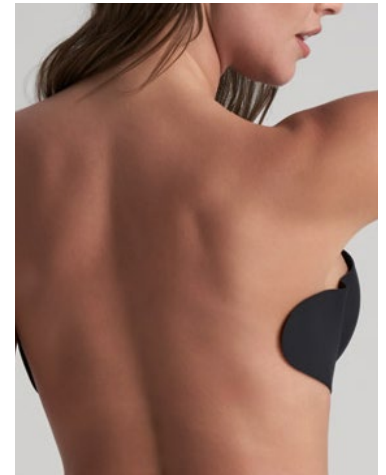
We offer a wide range of adhesive bras in multiple styles, tones and finishes.

All styles are designed to offer a strapless and backless solution and range from cup A to E (except for the Glam Bra specifically designed for larger cups ranging from C to G). Check the size chart at the bottom of the page to find your perfect fit.



Unique selling points:

- Strapless and backless
- Reusable up to 25 times
- Dermatologically approved & Hypoallergenic



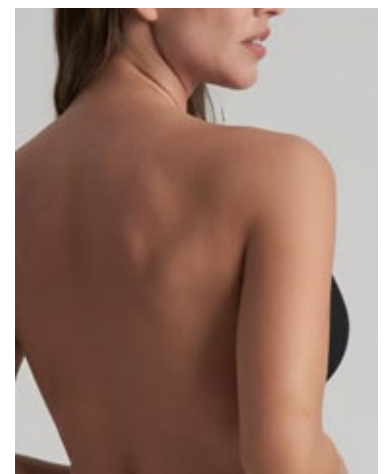
Gala bra
GLABRA
A-B-C-D-E
● ●



Model wearing:
Gala bra - C cup
Sculpting ultra low thong - M



Seamless u-style bra
SUSBRA
A-B-C-D-E
● ●



Lace-it bra
LCTBRA
A-B-C-D-E
● ● ○

Composition

88% Polyamide / 12% Elastane

Care instructions



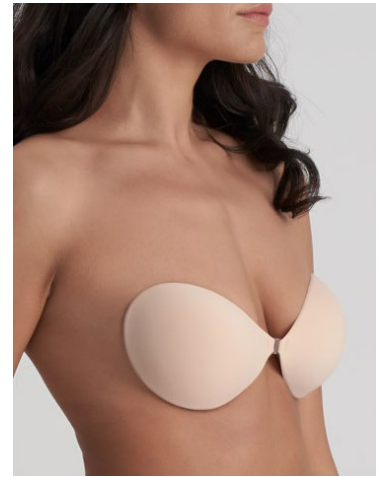
The product lines are extremely clean and minimal as we eliminated visible stitches whenever possible. The different colours match the rest of the products in our collection, so that you can build a set by combining an adhesive bra with a shapewear bottom, padded panties or our laser cut underwear.

All bras are reusable up to 25 times. All they need is a bit of care. They can be delicately hand washed paying extra care to the adhesive part. All our bras are dermatologically approved, non-irritating and hypoallergenic.

Expert tip:

Make sure your skin is free of lotions and creams as this will compromise the effectiveness of the adhesive.

The adhesive protective films have to be stored and reapplied on the products after using it for ultimate preservation of the glue.



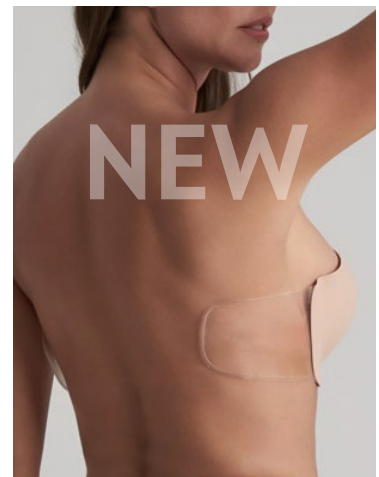
Invisible bra
INVBRA
A-B-C-D-E
● ●



Model wearing:
Glam bra - E cup
Sculpting high waist short - XL



Glam bra
GLMBRA
C-D-E-F-G
● ●



Diva bra
DIVABR
A-B-C-D-E
● ●

Bra's

	EU	UK	USA	FR,ES,PT	IT
A	70A 75A 70B	32A 34A 32B	32A 34A 32B	85A 90A 85B	1A 2A 1B
B	70C 75B 80A	32C 34B 36A	32C 34B 36A	85C 90B 95A	1C 2B 3A
C	70D 75C 80B 85A	32D 34C 36B 38A	32D 34C 36B 38A	85D 90C 95B 100A	1D 2C 3B 4A
D	70E 75D 80C 85B 90A	32DD 34D 36C 38B 40A	32DD 34D 36C 38B 40A	85E 90D 95C 100B 105A	1E 2D 3C 4B 5A
E	70F 75E 80D 85C 90B	32E 34DD 36D 38C 40B	32F 34DD 36D 38C 40B	85F 90E 95D 100C 105B	1F 2E 3D 4C 5B
F	70G 75F 80E 85D 90C	32F 34E 36D 38D 40C	32G 34F 36DD 38D 40C	85G 90F 95E 100D 105C	1G 2F 3E 4D 5C
G	70H 75G 80F 85E 90D	32G 34F 36E 38DD 90D	32H 34G 36F 38DD 90D	85H 90G 95F 100E 105D	1H 2G 3F 4E 5D

Name - Style code

Beige Black White

Gala bra
GLABRA



A	934N	938N
B	935N	939N
C	936N	940N
D	937N	941N
E	950N	951N

Seamless u-style bra
SUSBRA



A	1041	1046
B	1042	1047
C	1043	1048
D	1044	1049
E	1045	1050

Lace-it bra
LCTBRA



A	902N	907N	944N
B	903N	908N	945N
C	904N	909N	946N
D	905N	910N	947N
E	906N	911N	948N

Name - Style code

Beige Black

Invisible bra
INVBRA



A	957N	961N
B	958N	962N
C	959N	963N
D	960N	964N
E	1397	1398

Glam bra
GLMBRA



C	1712	1720
D	1713	1721
E	1714	1722
F	1715	1723
G	1716	1724

Diva bra
DIVABR
New style



A	2280	2285
B	2281	2286
C	2282	2287
D	2283	2288
E	2284	2289



Model wearing:
Diva bra - C cup
Low back mid waist short - M

TAPES



Model wearing:
Body tape
Invisible short - M

Completely invisible under any outfit, our tapes are the ultimate backless and strapless solution. They deliver the ultimate nude look and guarantee a very natural look.

All tapes are single use products. The transparent tapes are made in The Netherlands and from 3M medical adhesive film. They are dermatologically approved and hypoallergenic.



Unique selling points:

- Dermatologically approved & Hypoallergenic
- Waterproof, sweatproof & party proof
- Invisible look



Breast lift tape satin
BLTSAT
A-C/D-F/F-H
● ●



Model wearing
Breast lift tape silicone - A-C
Sculpting mid waist brief - M



Breast lift tape silicone
BLTSIL
A-C/D-F/F-H
● ●



Breast tape roll
BTRSAT
A-F
●

Breast lift tapes & pads

	70	75	80	85	90
A	A-C	A-C	A-C	A-C	D-F
B	A-C	A-C	A-C	D-F	D-F
C	A-C	A-C	D-F	D-F	D-F
D	A-C	D-F	D-F	D-F	F-H
E	D-F	D-F	D-F	F-H	F-H
F	D-F	D-F	F-H	F-H	F-H
G	D-F	F-H	F-H	F-H	F-H
H	F-H	F-H	F-H	F-H	F-H

Expert tip:

Make sure your skin is free of lotions and creams as this will compromise the effectiveness of the adhesive.

Follow the visual instructions on the back of the packaging to put them on... It's very easy.



Perfect cleavage tape
PCTAPE
A-F



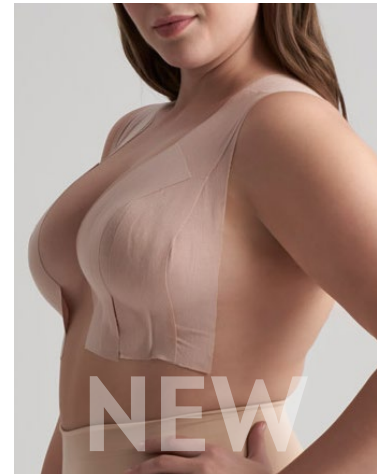
Body tape 5cm
BDTAPE
one-size



Model wearing:
Body tape
Seamless mid waist brief - XL



Body tape 7,5cm
BDTAPE
one-size



Body tape 10cm
BDTAPE
one-size



Double sided body tape
BDTPDB
one-size



Breast lift pads
BLPADS
A-F





Model wearing:
Body tape
Invisible short - M

Expert tip:

Use our Pre-Taping Adhesive Spray to enhance the performances of our body tapes and pads. Spray your skin before putting on the tapes and you will ensure a stronger and longer grip.

Removing a body tape is no longer an unhappy ending. Use our Adhesive Remover to gently remove body tapes and pads. Apply the liquid on the tapes before removing them; leave the liquid a couple of minutes to penetrate the tape and reach your skin and gently peel off.

NEW



Adhesive remover
ADHREM
one-size

NEW



Pre-taping adhesive spray
PRTASP
one-size



Dress tape box
DRTBOX
one-size



Dress tape dispenser
DRTDIS
one-size

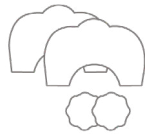


Dress tape strips
DRTP3M
one-size

Name - Style code

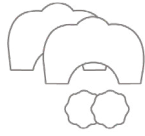
Beige Brown Black

Breast lift tape satin
BLTSAT



A-C	9350N	99350N
D-F	9351N	99351N
F-H	9352N	99352N

Breast lift tape silicone
BLTSIL



A-C	9375N	99354N
D-F	9376N	99355N
F-H	9377N	99356N

Breast tape roll
BTRSAT



A-F 974N

Body tape
BDTAPE
New size added 10cm



5cm	1566	1568	1569
7,5cm	1250	1252	-
10cm	1570	-	-

Body tape
BDTPDB

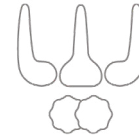


double 1560 - 1561

Name - Style code

Beige Brown -

Perfect cleavage tape
PCTAPE



A-F 9391N

Breast lift pads
BLPADS



A-C	1256	1264
D-F	1257	1265
F-H	1258	1266

Adhesive remover
ADHREM
New style



one-size 1255

Pre-taping adhesive spray
PRTASP
New style



one-size 1254

Dress tapes
DRTBOX
DRTDIS
DRTP3M



one-size	973
one-size	972
one-size	9390N



Model wearing:
Body tape
Invisible short - M

PULL-UPS
& LIFTS



Model wearing:
Sculpting lifts - C cup
Sculpting high waist short - M

Our Pull-ups and Lifts work on the same fitting principle as our tapes, to deliver a strapless and backless solution. They are made of 100% moulded silicone cups or fabric moulded cups with strong adhesive to create the perfect lift and shape you are looking for.

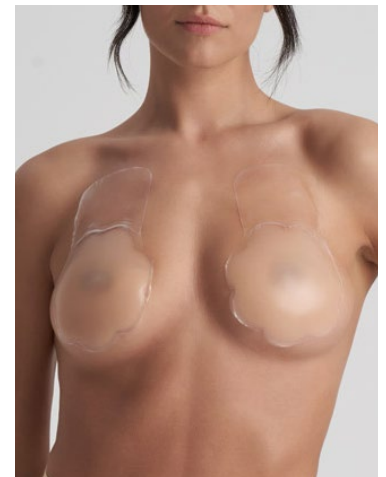
All products are very durable and reusable up to 25 or 50 times depending on the adhesive.

They are all dermatologically approved and hypoallergenic.



Unique selling points:

- Dermatologically approved & Hypoallergenic
- Lifts and shapes



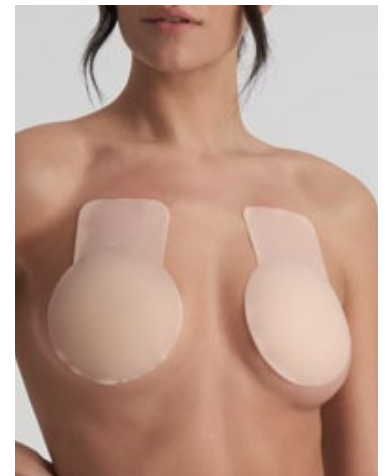
Silicone pull-ups

SILPUP

M-XL XXL



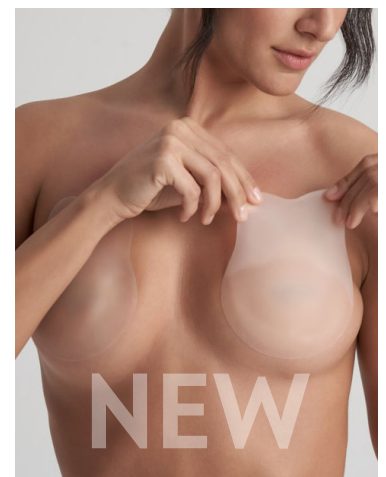
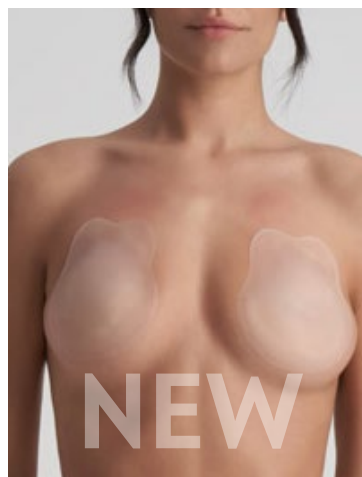
Model wearing:
Silicone pull-ups - M
Sculpting mid waist brief - M



Matt silicone pull-ups

MSLPUP

M-XL-XXL



Rabbit silicone cups

RSLPUP

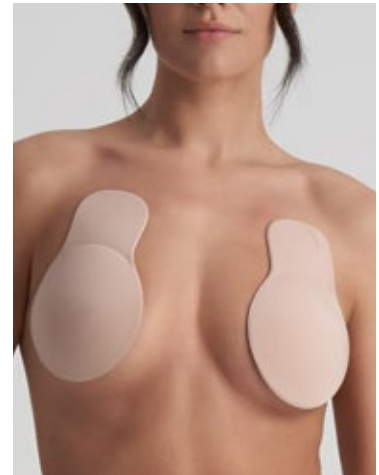
M-XL



Expert tip:

Make sure your skin is free of lotions and creams as this will compromise the effectiveness of the adhesive.

Follow the visual instructions on the back of the packaging to put them on... It's very easy.



Fabric pull-ups
FABPUP
M-XL
● ●



Model wearing:
Fabric pull-ups - M
Sculpting mid waist brief - M



Multi pull-ups
MPLLUP
one-size
● ●



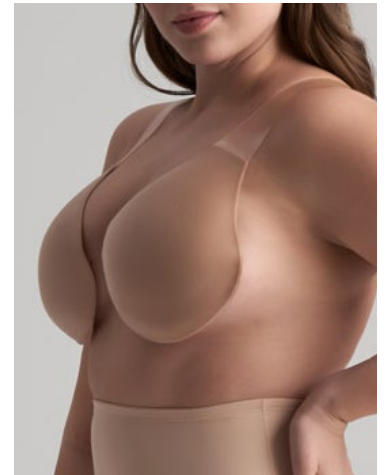
Sculpting silicone lifts
SSLIFT
C-D-E-F-G-H
●

Pull-ups

	70	75	80	85	90
A	M	M	M	M	XL
B	M	M	M	XL	XXL
C	M	M	XL	XXL	XXL
D	M	XL	XXL	XXL	-
E	XL	XXL	XXL	-	-

Sculpting lifts

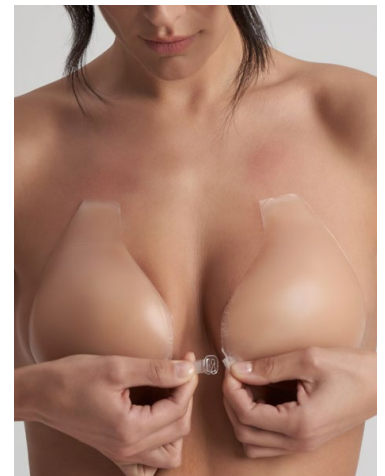
	70	75	80	85	90	90
B	-	-	-	C	D	E
C	-	-	C	D	E	E
D	-	C	D	E	E	F
E	C	D	E	E	F	G
F	D	E	E	F	G	H
G	E	E	F	G	H	-
H	E	F	G	H	-	-



Sculpting lifts
SCTLFT
C-D-E-F-G-H



Model wearing:
Sculpting lifts - E cup
Sculpting high waist short - XXL



Silicone cups
SILCUP
A-B-C-D



Silicone cups & Push-up cups

	70	75	80	85	90
A	A	A	A	A	A
B	A	B	B	B	-
C	B	C	C	-	-
D	C	D	-	-	-
E	D	-	-	-	-



Push-up cups
PUPCUP
A-B-C-D



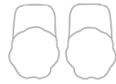


Model wearing:
Sculpting lifts - C cup
Sculpting high waist short - M

Name - Style code

Beige Brown Black

Silicone pull-ups
SILPUP
New size added XXL



M	975N	1018
XL	992	1025
XXL	993	-

Matt silicone pull-ups
MSLPUP
New size added XXL



M	1395
XL	1396
XXL	1399

Rabbit silicone cups
RSLPUP
New style



M	1595
XL	1596

Fabric pull-ups
FABPUP



M	990	1082
XL	991	1083

Multi pull-up
MPLLUP



one-size	1088	1089
----------	------	------

Name - Style code

Beige Black

Sculpting silicone lifts
SSLIFT



Sculpting lift
SCTLFT



Silicone cups
SILCUP



Push-up cups
PUPCUP



C	1090	
D	1091	
E	1092	
F	1093	
G	1094	
H	1095	
C	1733	1739
D	1734	1740
E	1735	1741
F	1736	1742
G	1737	1743
H	1738	1744
A	1080	
B	1081	
C	1079	
D	1078	
A	1745	1749
B	1746	1750
C	1747	1751
D	1748	1752



Model wearing:
Fabric pull-ups - M

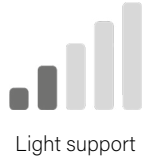
INVISIBLE SHAPEWEAR



Model wearing:
Invisible bra top v-neck - M
Invisible mid waist brief - M

Our Invisible Shapewear collection covers a wide range of styles in 2 different colours: beige and black.

Designed to smooth your figure and shape with comfort. With 20% elastane the collection combines a very soft and cozy hand feel, with a good shaping power.



The entire collection is stitch-free, with hems realized by folding and thermally gluing the fabric.

You can combine tops and bottoms and you can even mix and match with our adhesive products, as the colours are matching.



High waist thong
INVHWT



High waist brief
INVHWB



Mid waist thong
INVMWT

Available sizes
S-M-L-XL-XXL

Available colours
● ●

Composition
80% Polyamide / 20% Elastane

Care instructions
🧺 ✂️ 🚫 🚫 🚫

Unique selling points:

- Invisible
- Light weight & soft fabric
- Stitching and seam free
- Feels like a second skin

Expert tip:

Do not miss our invisible bra tops. One of our different models will become your new favorite. No more uncomfortable wired bras, but supportive wire free bras to wear every day in absolute comfort.



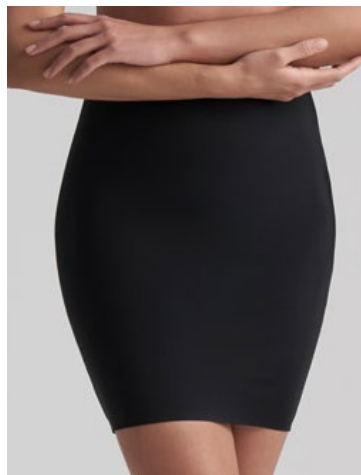
Mid waist brief
INVMWB



Model wearing:
Invisible bra top v-neck - XL
Invisible short - XL



Short
INVSRT



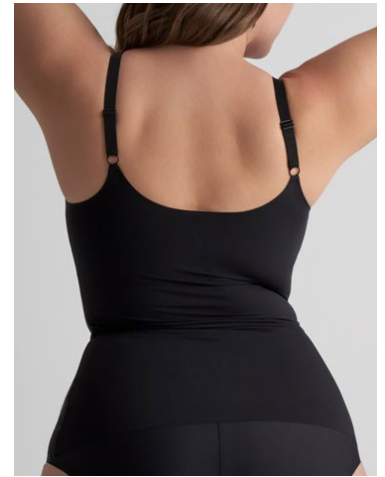
Skirt
INVSKT

HW + MW Thong / HW + MW Brief / HW Short / Skirt

Bra sizing	S	M	L	XL	XXL
Waist	68-74	76-82	84-90	92-98	100-106
Hips	89-95	97-103	105-111	113-119	122-128

Singlet / Dress

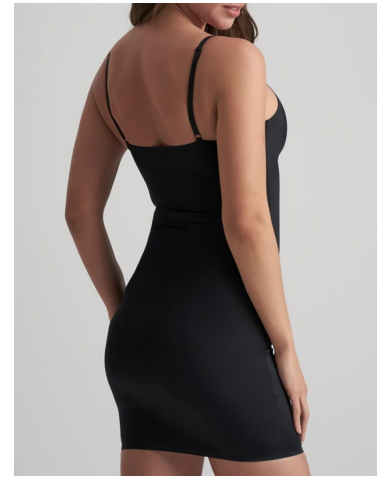
Bra sizing	S	M	L	XL	XXL
Bust	85-90	92-97	99-104	106-111	113-118
Underbust	68-72	73-77	78-82	83-87	88-92
Waist	68-74	76-82	84-90	92-98	100-106
Hips	89-95	97-103	105-111	113-119	122-128



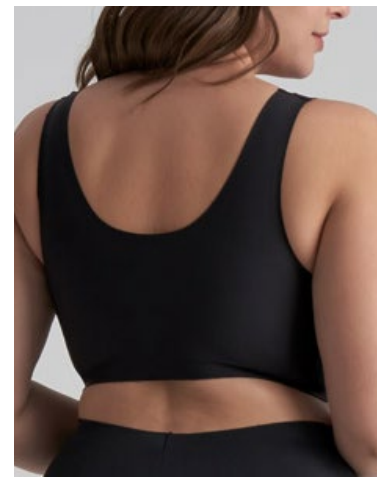
Singlet
INVSING



Model wearing:
Invisible bra top v-neck - M
Invisible high waist thong - M



Singlet dress
INVDRS



Bra top v-neck
INBRVN

Bra Top / Wire free bra

Bra sizing	S	M	L	XL	XXL
Bust	85-90	92-97	99-104	106-111	113-118
Underbust	68-72	73-77	78-82	83-87	88-92
Bra size	70B/70C	75B/75C/70D	75D/80B 80C/85B	80D/85C 85D/90B	90C/90D/95B



Bra top round neck
INBRN



Bra top deep plunge
INBRDP



Bra top push-up
INBRPU

Name - Style code

Beige Black


High waist thong INVHWT		S	1400	1405
		M	1401	1406
		L	1402	1407
		XL	1403	1408
		XXL	1404	1409

High waist brief INVHWB		S	1200	1205
		M	1201	1206
		L	1202	1207
		XL	1203	1208
		XXL	1204	1209

Mid waist thong INVMWT		S	1640	1645
		M	1641	1646
		L	1642	1647
		XL	1643	1648
		XXL	1644	1649

Mid waist brief INVMWB		S	1655	1660
		M	1656	1661
		L	1657	1662
		XL	1658	1663
		XXL	1659	1664


Short INVSRT		S	1210	1215
		M	1211	1216
		L	1212	1217
		XL	1213	1218
		XXL	1214	1219

Skirt INVSKT		S	1220	1225
		M	1221	1226
		L	1222	1227
		XL	1223	1228
		XXL	1224	1229

Name - Style code

Beige Black

Singlet INVSING		S	1230	1235
		M	1231	1236
		L	1232	1237
		XL	1233	1238
		XXL	1234	1239

Singlet dress INVDRS		S	1240	1245
		M	1241	1246
		L	1242	1247
		XL	1243	1248
		XXL	1244	1249

Bra top v-neck INBRVN		S	1500	1506
		M	1501	1507
		L	1502	1508
		XL	1503	1509
		XXL	1504	1510

Bra top round neck INBRN		S	1518	1524
		M	1519	1525
		L	1520	1526
		XL	1521	1527
		XXL	1522	1528

Bra top deep plunge INBRDP		S	1610	1616
		M	1611	1617
		L	1612	1618
		XL	1613	1619
		XXL	1614	1620

Bra top push-up INBRPU		S	1622	1628
		M	1623	1629
		L	1624	1630
		XL	1625	1631
		XXL	1626	1632



Model left wearing:
Invisible bra top v-neck - M
Invisible high waist thong - M

Model right wearing:
Invisible bra top v-neck - XL
Invisible mid waist brief - XL

NEW



LOW BACK
SHAPEWEAR

Model wearing:
Deep plunge strapless bra - M
Low back mid waist short - M

This new shapewear line is very extensive and has 1 specific USP; LOW BACK. Almost all styles are made with a 'low' feature. Whether this relates to the front or the back of the product. Low back bottoms, low back bodysuits, a bra with a deep plunge at the front; in short, it is a very diverse collection.

What is also not to be missed, is the fabric. The fabric is velvety soft and very comfortable to wear. The light shaping support makes it easy to wear every day and at any time.



Light support

All low back bottoms have a silicone edge on the inside, both at the front and at the back. This is to ensure that the items stay properly in place.



Model wearing:
Glam bra - E & C cup
Low back mid waist brief - XL & M

Available sizes

S-M-L-XL-XXL

Available colours



Composition

70% Polyamide / 30% Elastane

Care instructions



Mid waist thong
LBMWTH



Mid waist brief
LBMWBR



Mid waist short
LBMWSH

Unique selling points:

- Perfect backless solution
- Ultra low back
- Luxury soft material

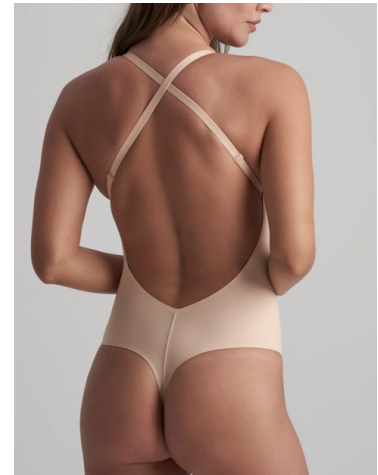
The bodysuits also have some very nice USPs. The shoulder straps can be worn in multiple ways, but also in multiple positions. And the straps can even be exchanged with a set of transparent straps. This is to complete the look and look as open and invisible as possible.

The whole range is available in size S until XXL and in the colors are Beige and Black.

Expert tip:

This range is extremely suitable for low back dresses, open back tops and not to forget wedding dresses.

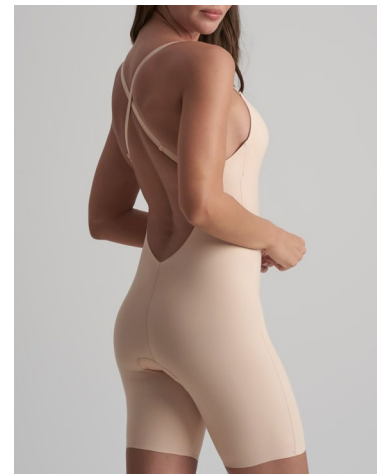
Nowadays a lot of wedding dresses are made with very open or low backs and what is not better than to use our lower back bottoms underneath it.



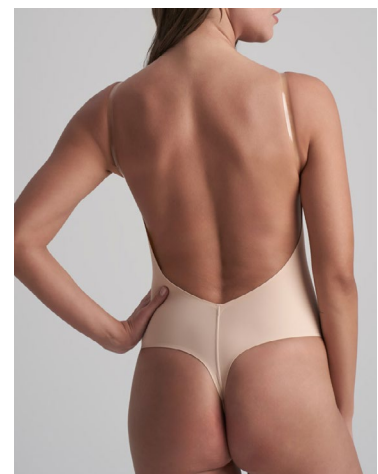
Bodysuit thong
LBBTHO



Model wearing:
Low back bodysuit short - M



Bodysuit short
LBBSHO



Sensual bodysuit
LBSBOD

MW Thong / MW Brief / MW Short

Bra sizing	S	M	L	XL	XXL
Waist	68-74	76-82	84-90	92-98	100-106
Hips	89-95	97-103	105-111	113-119	122-128

The manufacture of the garments is also something to highlight. Everything is made to support that invisible look everyone is looking for in shapewear. Laminated seams and lasercut edges everywhere possible to ensure a clean and sophisticated look.

To complete the range we have also add 2 bodysuits to the mix. Plain and simple looking, but not in making. We have created the perfect fit with the most extensive clean look possible. Good for everyday wear under your clothes or just to combine with a nice pair of jeans and a blazer.

Bra Top

Bra sizing	S	M	L	XL	XXL
Bust	85-90	92-97	99-104	106-111	113-118
Underbust	68-72	73-77	78-82	83-87	88-92
Bra size	70B/70C	75B/75C/70D	75D/80B 80C/85B	80D/85C 85D/90B	90C/90D/95B



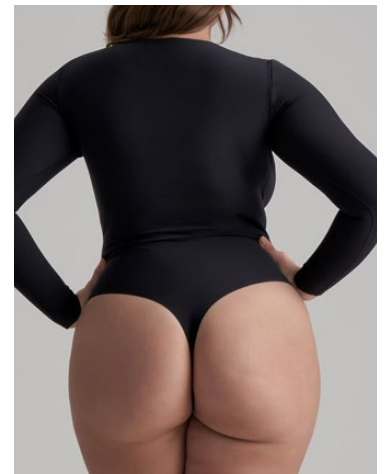
Deep plunge strapless bra
LBDPSB



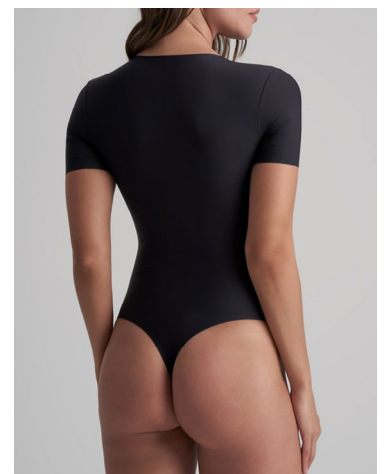
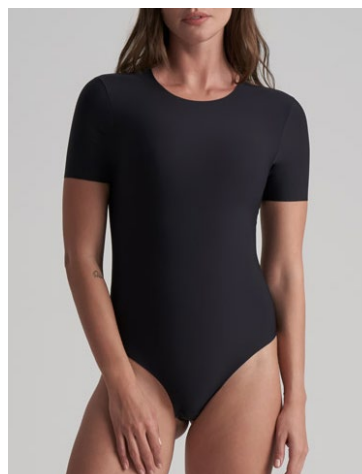
Model wearing:
Deep plunge strapless bra - M
Low back mid waist short - M

Bodysuit

Bra sizing	S	M	L	XL	XXL
Bust	85-90	92-97	99-104	106-111	113-118
Underbust	68-72	73-77	78-82	83-87	88-92
Waist	68-74	76-82	84-90	92-98	100-106
Hips	89-95	97-103	105-111	113-119	122-128
Bra size	70B/70C	75B/75C/70D	75D/80B 80C/85B	80D/85C 85D/90B	90C/90D/95B



Bodysuit long sleeve
LBBSL



Bodysuit short sleeve
LBBSL



Model wearing:
Low back bodysuit long sleeve - M

Name - Style code

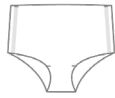
Beige Black

Mid waist thong
LBMWTH



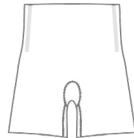
S	2430	2435
M	2431	2436
L	2432	2437
XL	2433	2438
XXL	2434	2439

Mid waist brief
LBMWBR



S	2440	2445
M	2441	2446
L	2442	2447
XL	2443	2448
XXL	2444	2449

Mid waist short
LBMWSH



S	2450	2455
M	2451	2456
L	2452	2457
XL	2453	2458
XXL	2454	2459

Bodysuit thong
LBBTHO



S	2460	2465
M	2461	2466
L	2462	2467
XL	2463	2468
XXL	2464	2469

Bodysuit short
LBBSHO



S	2470	2475
M	2471	2476
L	2472	2477
XL	2473	2478
XXL	2474	2479

Name - Style code

Beige Black

Sensual bodysuit
LBSBOD



S	2480	2485
M	2481	2486
L	2482	2487
XL	2483	2488
XXL	2484	2489

Deep plunge strapless bra
LBDPSB



S	2490	2495
M	2491	2496
L	2492	2497
XL	2493	2498
XXL	2494	2499

Bodysuit long sleeve
LBBLSL



S	2500
M	2501
L	2502
XL	2503
XXL	2504

Bodysuit short sleeve
LBBSSL



S	2505
M	2506
L	2507
XL	2508
XXL	2509



Model wearing:
Low back sensual bodysuit - M

NEW



LACY
SHAPEWEAR

Model wearing:
Strapless bra - M
Lacy openbust bodysuit - M

SEXY, FEMININE & INNOVATIVE, those are the 3 words describing our new line of shapewear, LACY. The shapewear styles are made of a very strong but super lightweight lace material. The flower design makes the look feminine, the sheerness makes the look sexy and the strong support of the fabric construction makes the look smooth. The days of shapewear just looking boring and plain are over.



Mid support

We have 4 styles available in this line; a high waist thong, high waist brief, high waist short and a wear your own bra bodysuit. Each style available in size S until XXL and only available in gorgeous black. All styles have a very minimal amount of seams. To keep a very clean and invisible look. We created a very flat surface on this lace, to make it still invisible under clothing. The leg opening and waist is finished with a laminated construction to reduce stitchings and keep the look smooth.



Model wearing:
invisible bra top push-up - XL
Lacy high waist shaping short - M

Available sizes

S-M-L-XL-XXL

Available colours



Composition

51% Polyamide / 49% Elastane

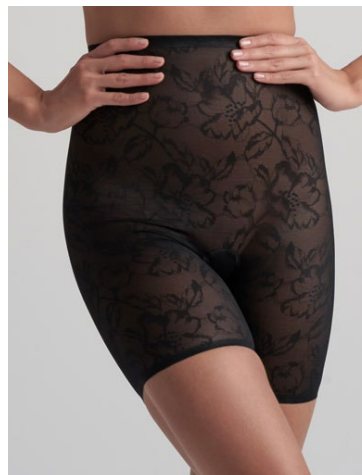
Care instructions



High waist shaping thong
LACHWT



High waist shaping brief
LACHWB



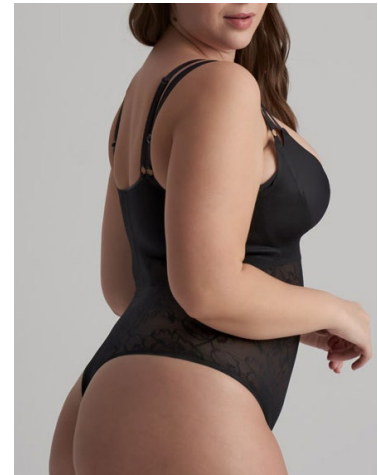
High waist shaping short
LACHWS

Unique selling points:

- Feminine lace design
- Flat & invisible fabric structure
- Clean & seamfree look

Expert tip:

The WYOB Bodysuit is a very good item to have in your wardrobe. You can wear this item with any of your bras, which makes this item to be easy to use for all breast sizes



Open bust bodysuit
LACOB

Bodysuit

Bra sizing	S	M	L	XL	XXL
Bust	85-90	92-97	99-104	106-111	113-118
Underbust	68-72	73-77	78-82	83-87	88-92
Waist	68-74	76-82	84-90	92-98	100-106
Hips	89-95	97-103	105-111	113-119	122-128
Bra size	70B/70C	75B/75C/70D	75D/80B 80C/85B	80D/85C 85D/90B	90C/90D/95B

HW Thong / HW Brief / HW Short

Bra sizing	S	M	L	XL	XXL
Waist	68-74	76-82	84-90	92-98	100-106
Hips	89-95	97-103	105-111	113-119	122-128



Model wearing:
Strapless bra - M
Lacy high waist shaping short - M

Name - Style code

Black

High waist shaping thong
LACHWT



S	2400
M	2401
L	2402
XL	2403
XXL	2404

High waist shaping brief
LACHWB



S	2405
M	2406
L	2407
XL	2408
XXL	2409

Name - Style code

Black

High waist shaping short
LACHWS



S	2410
M	2411
L	2412
XL	2413
XXL	2414

Open bust bodysuit
LACOBBS



S	2415
M	2416
L	2417
XL	2418
XXL	2419



Model wearing:
Ultra plunge bra - M
Lacy high waist shaping thong - M



POWERMESH
SHAPEWEAR

Model wearing:
Sculpting wire free bra - M
Powermesh high waist thong - M

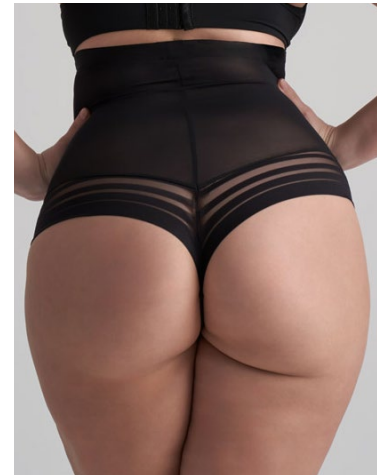
Who said shapewear only has to be functional?
Do not miss our latest shapewear collection.

With its transparencies and geometrical jacquard lace, the Powermesh collection is feminine, sexy and shaping all in once. It enhances your female curves and makes you look nice at the same time.

Perfect all year around, combining style and functionality.



Mid support



High waist thong
PWMHWT



Model wearing:
Sculpting wire free bra - M
Powermesh high waist short - M

Available sizes

S-M-L-XL-XXL

Available colours



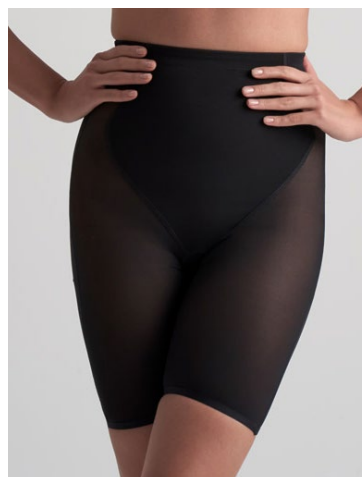
Composition

88% Polyamide / 12% Elastane

Care instructions



High waist brief
PWMHWB



High waist short
PWMHSH

Unique selling points:

- Made of sheer & breathable mesh
- Medium control
- Feminine look
- Contemporary lace design

Expert tip:

Are you looking for a hourglass shaped waist? Then do not miss our Waist Trainer!



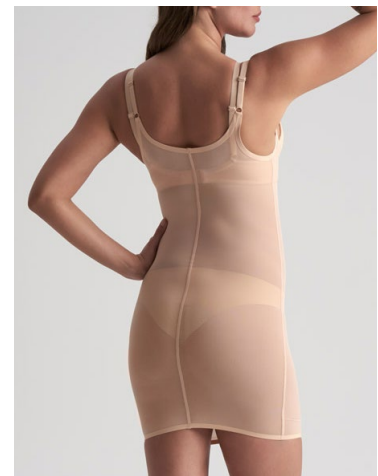
High waist skirt
PWMHSK

HW Thong / HW Brief / HW Short / HW Skirt

Bra sizing	S	M	L	XL	XXL
Waist	68-74	76-82	84-90	92-98	100-106
Hips	89-95	97-103	105-111	113-119	122-128



Model wearing:
Powermesh bodysuit brief - M



Open bust dress
PWMOBD

Open Bust Dress

Bra sizing	S	M	L	XL	XXL
Bust	85-90	92-97	99-104	106-111	113-118
Underbust	68-72	73-77	78-82	83-87	88-92
Waist	68-74	76-82	84-90	92-98	100-106
Hips	89-95	97-103	105-111	113-119	122-128



Waisttrainer
PWMWTR

Waist Shaper

Bra sizing	S	M	L	XL	XXL
Underbust	68-72	73-77	78-82	83-87	88-92
Waist	68-74	76-82	84-90	92-98	100-106
Hips	89-95	97-103	105-111	113-119	122-128

Name - Style code

Beige Black

High waist thong
PWMHWT



S	1430	1440
M	1431	1441
L	1432	1442
XL	1433	1443
XXL	1434	1444

High waist brief
PWMHWB



S	1141	1146
M	1142	1147
L	1143	1148
XL	1144	1149
XXL	1145	1150

High waist short
PWMHSH



S	1171	1176
M	1172	1177
L	1173	1178
XL	1174	1179
XXL	1175	1180

Name - Style code

Beige Black

High waist skirt
PWMHSK



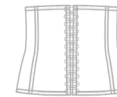
S	1151	1156
M	1152	1157
L	1153	1158
XL	1154	1159
XXL	1155	1160

Open bust dress
PWMOBD



S	1181	1186
M	1182	1187
L	1183	1188
XL	1184	1189
XXL	1185	1190

Waisttrainer
PMMWTR



S	1445	1455
M	1446	1456
L	1447	1457
XL	1448	1458
XXL	1449	1459



Model wearing:
Sculpting wire free bra - M
Powermesh high waist thong - M



SCULPTING
SHAPEWEAR

Model wearing:
Sculpting bodysuit deep v thong - M

Minimal look, clean lines, laser cut, high intensity...

The Sculpting Shapewear collection is extremely thin and thanks to its very high percentage of elastane (41%) it will deliver the best performing shaping power available in our collection so far.



The handfeel is luxurious, soft and dry. Hems are laser cut and enriched with silicone strips on the inside, to help the garments stay in place. Thanks to the thin and dry fabric, the laser cuts are extremely clean.

Doesn't matter if you are a size S or a size XXL, the sculpting collection will radically change and smoot your figure.



Available sizes
S-M-L-XL-XXL

Available colours
● ●

Composition
59% Polyamide / 41% Elastane

Care instructions
🧺 ✂️ 🚫 🚫 🚫



High waist thong
SCPHWT



High waist brief
SCPHWB



Mid waist thong
SCPMWT

Unique selling points:

- Lasercut edges
- No-show solution under tight clothing
- High control
- Silicone at inside to keep the garments on the right place while wearing
- Super light weight fabric

Expert tip:

High waist brief and thong are an every day must-have and perfect to wear in all seasons.



Mid waist brief
SCPMWB



Model wearing:
Sculpting wire free bra - M
Sculpting high waist short - M



High waist short
SCPHWS

HW + MW Thong / HW + MW Brief / HW Short

Bra sizing	S	M	L	XL	XXL
Waist	68-74	76-82	84-90	92-98	100-106
Hips	89-95	97-103	105-111	113-119	122-128



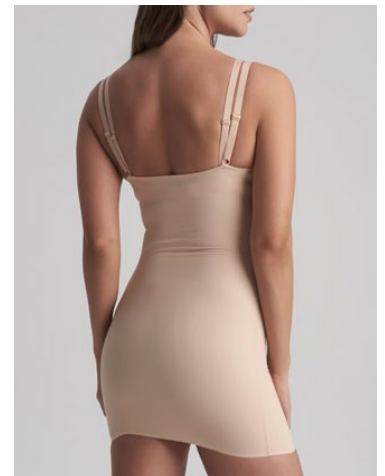
Bodysuit padded wire free
SCPBWF

Bodysuit

Bra sizing	S	M	L	XL	XXL
Bust	85-90	92-97	99-104	106-111	113-118
Underbust	68-72	73-77	78-82	83-87	88-92
Waist	68-74	76-82	84-90	92-98	100-106
Hips	89-95	97-103	105-111	113-119	122-128
Bra size	70B/70C	75B/75C/70D	75D/80B 80C/85B	80D/85C 85D/90B	90C/90D/95B



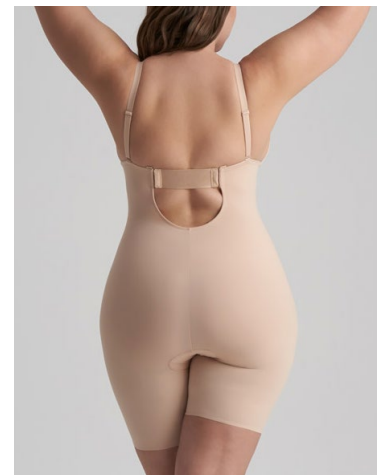
Bodysuit padded wire
SCBPBW



Open bust dress
SCPOBD

Singlet / Top / Open Bust Dress

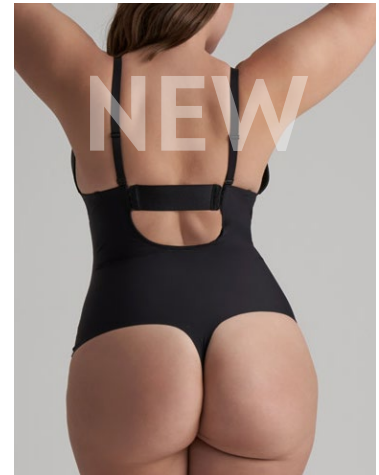
Bra sizing	S	M	L	XL	XXL
Bust	85-90	92-97	99-104	106-111	113-118
Underbust	68-72	73-77	78-82	83-87	88-92
Waist	68-74	76-82	84-90	92-98	100-106
Hips	89-95	97-103	105-111	113-119	122-128



Bodysuit deep v
SCPBDV

Do not miss our new Bodysuit deep v thong (SCPBDVT). It was developed on the same base of the version with shorts we launched and sold very well last year.

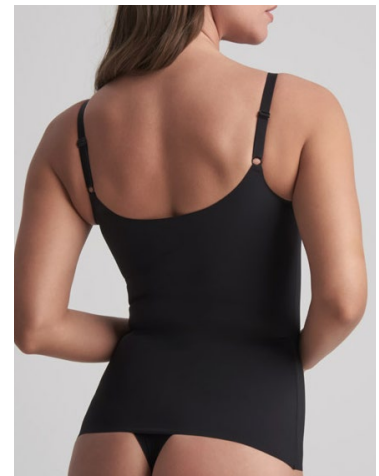
It also features an improved stich free plunge and under bust line, without any impact on support and performances.



Bodysuit deep v thong
SCPBDVT



Model wearing:
Sculpting singlet - M
Sculpting mid waist thong - M



Singlet
SCPSNG

Bra Top / Wire free bra

Bra sizing	S	M	L	XL	XXL
Bust	85-90	92-97	99-104	106-111	113-118
Underbust	68-72	73-77	78-82	83-87	88-92
Bra size	70B/70C	75B/75C/70D	75D/80B 80C/85B	80D/85C 85D/90B	90C/90D/95B



Cropped top
SCPCRT




Wire free bra
SCPWFB

Name - Style code

Beige Black

High waist thong SCPHWT		S	1310	1316
		M	1311	1317
		L	1312	1318
		XL	1313	1319
		XXL	1314	1320

High waist brief SCPHWB		S	1322	1328
		M	1323	1329
		L	1324	1330
		XL	1325	1331
		XXL	1326	1332

Mid waist thong SCPMWT		S	1685	1690
		M	1686	1691
		L	1687	1692
		XL	1688	1693
		XXL	1689	1694

Mid waist brief SCPMWB		S	1695	1700
		M	1696	1701
		L	1697	1702
		XL	1698	1703
		XXL	1699	1704


High waist short SCPHWS		S	1334	1340
		M	1335	1341
		L	1336	1342
		XL	1337	1343
		XXL	1338	1344


Bodysuit padded wire free SCPWF		S	1358	1364
		M	1359	1365
		L	1360	1366
		XL	1361	1367
		XXL	1362	1368

Bodysuit padded wire SCPBPW		S	1346	1352
		M	1347	1353
		L	1348	1354
		XL	1349	1355
		XXL	1350	1356


Name - Style code


Beige Black

Open bust dress SCPOBD		S	1370	1376
		M	1371	1377
		L	1372	1378
		XL	1373	1379
		XXL	1374	1380

Bodysuit deep v SCPBDV		S	1382	1388
		M	1383	1389
		L	1384	1390
		XL	1385	1391
		XXL	1386	1392

Bodysuit deep v thong SCPBDVT New style		S	2350	2355
		M	2351	2356
		L	2352	2357
		XL	2353	2358
		XXL	2354	2359

Cropped top SCPCRT		S	1805	1810
		M	1806	1811
		L	1807	1812
		XL	1808	1813
		XXL	1809	1814

Singlet SCPSNG		S	1815	1820
		M	1816	1821
		L	1817	1822
		XL	1818	1823
		XXL	1819	1824

Wire free bra SCPWFB		S	1540	1546
		M	1541	1547
		L	1542	1548
		XL	1543	1549
		XXL	1544	1550



Model wearing:
Sculpting wire free bra - M
Sculpting high waist brief - M

SEAMLESS
SHAPEWEAR



Model wearing:
Seamless reversible bra top - M
Seamless mid waist thong - M

High shaping power, extremely soft and seamless finishing are the key elements of the Seamless collection.

The seamless workmanship allows for different thicknesses in different parts of each garment, so that we can deliver the right amount of shaping power for each portion of your body.



Strong support

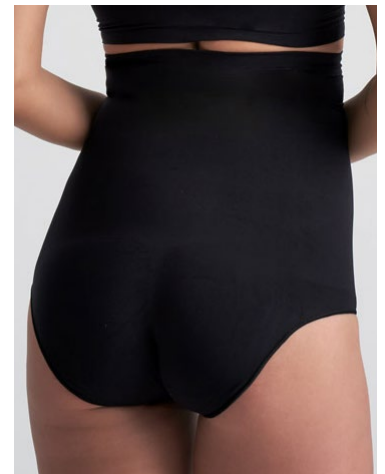
Our newest seamless collection is ultra soft and feels like a second skin, even though it is really strong shapewear. With this new group we cover a wide range of different styles. It is available in 2 colours and from size S-XXL.



High waist thong
STHWTG



Model wearing:
Seamless tube top - M
Seamless mid waist thong - M



High waist brief
STHWBR



Mid waist thong
STMWTG

Available sizes

S-M-L-XL-XXL

Available colours



Composition

79% Polyamide / 21% Elastane

Care instructions



Unique selling points:

- Seamless
- Soft handfeel
- Strong tummy & core control
- Silicone at inside

The Soft Touch Seamless styles offers targeted support and sculpting for your lower stomach & waist and smooths your tummy while being comfortable enough for everyday shapewear.

Expert tip:

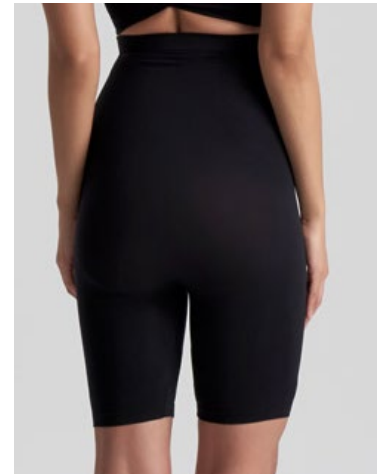
All pieces can be combined with each other and we have a few very special items in this range, like the Ultra Low Back Bodysuit, the Open Bust Bodysuit which can be worn with any type of bra and our Reversible Bra Top which can be worn at both sides and each side has a different neckline shape.



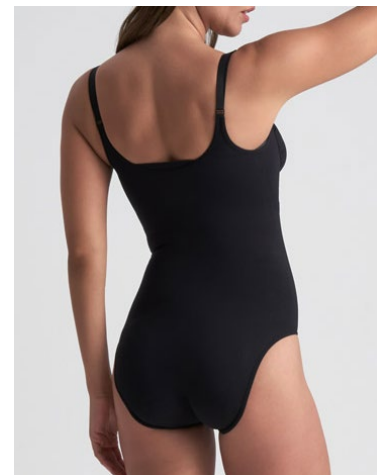
Mid waist brief
STMWBR



Model wearing:
Seamless reversible bra top - XL
Seamless high waist short - XL



High waist short
STHWSH



Bodysuit open bust
STBOBT

HW + MW Thong / HW + MW Brief / HW Short

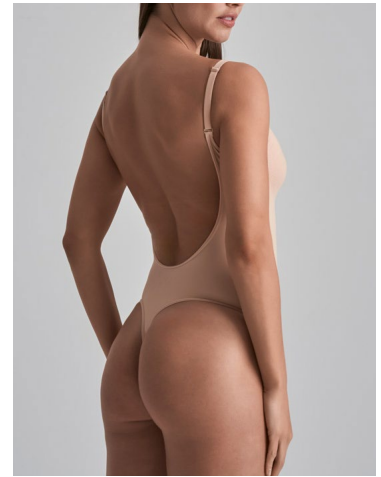
Bra sizing	S	M	L	XL	XXL
Waist	68-74	76-82	84-90	92-98	100-106
Hips	89-95	97-103	105-111	113-119	122-128



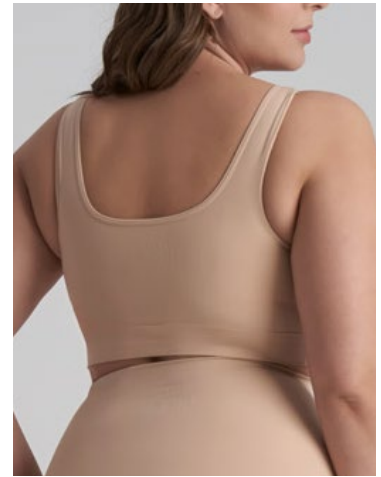
Model wearing:
Seamless tube top - M
Seamless high waist short - M

Bodysuit

Bra sizing	S	M	L	XL	XXL
Bust	85-90	92-97	99-104	106-111	113-118
Underbust	68-72	73-77	78-82	83-87	88-92
Waist	68-74	76-82	84-90	92-98	100-106
Hips	89-95	97-103	105-111	113-119	122-128
Bra size	70B/70C	75B/75C/70D	75D/80B 80C/85B	80D/85C 85D/90B	90C/90D/95B



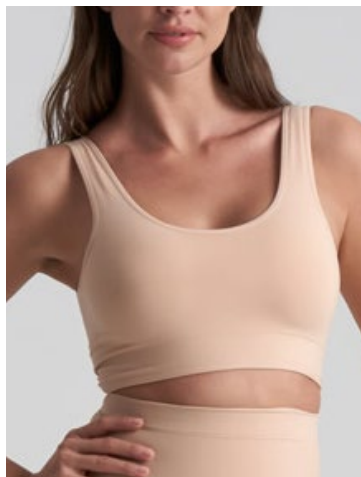
Bodysuit ultra low back
STBULB



Bra top
STBRTP

Bra Top / Wire free bra

Bra sizing	S	M	L	XL	XXL
Bust	85-90	92-97	99-104	106-111	113-118
Underbust	68-72	73-77	78-82	83-87	88-92
Bra size	70B/70C	75B/75C/70D	75D/80B 80C/85B	80D/85C 85D/90B	90C/90D/95B



Reversible bra top
STBRTP



Model wearing:
Seamless tube top - XL
Seamless high waist brief - XL



Tube top
STTBTP

Waist Shaper

Bra sizing	S	M	L	XL	XXL
Underbust	68-72	73-77	78-82	83-87	88-92
Waist	68-74	76-82	84-90	92-98	100-106
Hips	89-95	97-103	105-111	113-119	122-128



Waist shaper
STWSHP



Model wearing:
Strapless bra - M
Seamless bodysuit open bust - M



Model wearing:
Strapless bra - M
Seamless bodysuit open bust - M





High waist thong
SMLHVT



Double layer tummy control



Model wearing:
Seamless bra - M
Seamless high waist thong - M



High waist brief
SMLHVB



Bra
SMLBRA




Name - Style code

Beige Black

Name - Style code

Beige Black

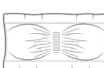
High waist thong STHWTG		S	2040	2045
		M	2041	2046
		L	2042	2047
		XL	2043	2048
		XXL	2044	2049

Bra top STBRTP		S	1990	1995
		M	1991	1996
		L	1992	1997
		XL	1993	1998
		XXL	1994	1999

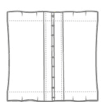
High waist brief STHWBR		S	2020	2025
		M	2021	2026
		L	2022	2027
		XL	2023	2028
		XXL	2024	2029


Reversible bra top STRBTP		S	2010	2015
		M	2011	2016
		L	2012	2017
		XL	2013	2018
		XXL	2014	2019

Mid waist thong STMWTG		S	2050	2055
		M	2051	2056
		L	2052	2057
		XL	2053	2058
		XXL	2054	2059

Tube top STTBTP		S	2000	2005
		M	2001	2006
		L	2002	2007
		XL	2003	2008
		XXL	2004	2009

Mid waist brief STMWBR		S	2030	2035
		M	2031	2036
		L	2032	2037
		XL	2033	2038
		XXL	2034	2039

Waist shaper STWSHP		S	2090	2095
		M	2091	2096
		L	2092	2097
		XL	2093	2098
		XXL	2094	2099

High waist short STHWSH		S	2060	2065
		M	2061	2066
		L	2062	2067
		XL	2063	2068
		XXL	2064	2069

High waist thong SMLHVT		S	1120	1125
		M	1121	1126
		L	1122	1127
		XL	1123	1128
		XXL	1124	1129

Bodysuit open bust STBOBT		S	2110	2115
		M	2111	2116
		L	2112	2117
		XL	2113	2118
		XXL	2114	2119

High waist brief SMLHVB		S	1110	1115
		M	1111	1116
		L	1112	1117
		XL	1113	1118
		XXL	1114	1119

Bodysuit ultra low back STBULB		S	2070	2075
		M	2071	2076
		L	2072	2077
		XL	2073	2078
		XXL	2074	2079

Bra SMLBRA		S	1130	1135
		M	1131	1136
		L	1132	1137
		XL	1133	1138
		XXL	1134	1139



Model wearing:
Seamless reversible bra top - M

NEW



WAIST CONTROL
SHAPEWEAR

Model wearing:
Strapless bra - M
Waist control high waist short - M

In 2023 we launched 2 waist control bottoms, mid waist brief and mid waist thong. Based on this success we have further developed this and gave the styles their own category within our full range of products.

We increased the category with the all-time best selling pieces: High waist thong, High waist brief and a high waist short.



All with a very strong shapewear support on the tummy and core area of the body. The full laminated finishing give these styles the ultimate invisible look. Clean, smooth and very easy to combine with any good bra of your own.



Thong
UNDWCT



Brief
UNDWCB



High waist thong
WCHWTH

Available sizes
S-M-L-XL-XXL

Available colours
● ●

Composition
83% Recycled polyamide / 17% Elastane

Care instructions
🧺 ✂️ 🚫 🧼 🧺

Unique selling points:

- Recycled micro
- Full tummy & core control
- Laminated edges & seams
- Ultimate clean look



Expert tip:

When the items come out of production, it needs to dry for 48 hours to maintain the strength of the glue. Since the items are produced with a huge amount of laminated glue in the tummy area, please stretch out the brief a couple of times before trying on. So the lamination glue becomes more flexible.



High waist brief
WCHWBR



Model wearing:
Strapless bra - M
Waist control high waist brief - M



High waist short
WCHWSH

HW + MW Thong / HW + MW Brief / HW Short

Bra sizing	S	M	L	XL	XXL
Waist	68-74	76-82	84-90	92-98	100-106
Hips	89-95	97-103	105-111	113-119	122-128

Name - Style code

Beige Black

Thong
UNDWCT



S	1785	1790
M	1786	1791
L	1787	1792
XL	1788	1793
XXL	1789	1794

Brief
UNDWCB



S	1795	1800
M	1796	1801
L	1797	1802
XL	1798	1803
XXL	1799	1804

High waist thong
WCHWTH



S	1865	1870
M	1866	1871
L	1867	1872
XL	1868	1873
XXL	1869	1874

Name - Style code

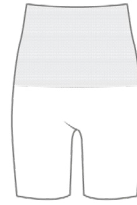
Beige Black

High waist brief
WCHWBR



S	1875	1880
M	1876	1881
L	1877	1882
XL	1878	1883
XXL	1879	1884

High waist short
WCHWSH



S	1885	1890
M	1886	1891
L	1887	1892
XL	1888	1893
XXL	1889	1894



Model wearing:
Strapless bra - M
Waist control high waist short - M

NEW

UNI
STRETCH

Model wearing:
Uni stretch thong - one-size

The name says it all.. our new line of very comfortable underwear is made to fit most women..

The very stretchy material used in this group is not only super soft but also light weight. The items have a very high comfort level and each style is made for daily wear.

Available in 2 colors, beige and black and in 1 size only which fits up to size XXL.



Boxer
UNISBO
one-size



High brief
UNISHB
one-size



Mid waist short
UNISSH
one-size

Available sizes
one-size fits all

Available colours



Composition
75% Polyamide / 25% Elastane

Care instructions

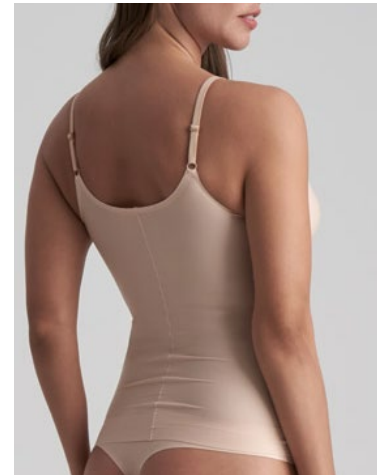


Unique selling points:

- 1 size fits most
- Super soft & stretchable fabric
- Comfortable daily underwear

Expert tip:

Unsure about adding another product collection to a busy store? The Unistretch collection gives you the unique opportunity to fit an entire collection into a very small space. Due to the incredible stretching properties of the material, there are no sizes. One single size fits S to XXL.



Singlet
UNISSI
one-size



Model wearing:
Uni stretch singlet - one-size
Uni stretch thong - one-size



Thong
UNISTH
one-size



Model wearing:
Ultra plunge bra - XL
Mid waist short - one-size

Model wearing:
Strapless bra - M
High brief - one-size

Uni stretch

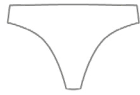
ONE-SIZE

	S	M	L	XL	XXL
EUR	36	38	40	42	44
FR-SP-PT	38	40	42	44	46
IT	40	42	44	46	48
UK	8	10	12	14	16
US	6	8	10	12	14
Waist	68-74	76-82	84-90	92-98	100-106
Hips	89-95	97-103	105-111	113-119	122-128
Underbust	68-72	73-77	78-82	83-87	88-92
Bust	82-96	89-103	97-111	104-118	112-126

Name - Style code

Beige Black

Thong
UNISTH



one-size 2550 2551

Boxer
UNISBO



one-size 2556 2557

High brief
UNISHB

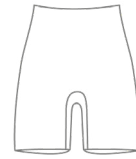


one-size 2554 2555

Name - Style code

Beige Black

Mid waist short
UNISSH



one-size 2558 2559

Singlet
UNISSI



one-size 2560 2561



Model wearing:
Uni stretch singlet - one-size
Uni stretch boxer - one-size

LEAK-PROOF
UNDERWEAR

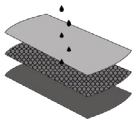


Model wearing:
Invisible bra top push-up - M
Period hipster laminated - M

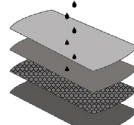
Leak-proof panties collection

Three different styles (Thong, Hipster, High Brief) in two different finishes (plain laminated micro and lace). Each style correspond to a different absorbency level, from a more revealing Thong for low flow, to a more covering High Brief for high flow. Also available in lace as there is no need for leak-proof underwear to be only functional.

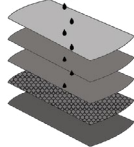
LOW FLOW
3 LAYERS



MEDIUM FLOW
4 LAYERS



HIGH FLOW
5 LAYERS



Built-in leak proof protection

Our leak-proof underwear collection is specifically designed to keep you period and sneeze leaks safe. The multiple layers of construction ensure different levels of absorbency, no leakage and no odours and natural fibres in contact with your skin.



Boxerstring lace - low flow
PBSTLC



Model wearing:
Sculpting wire free bra - M
Period high brief lace - M



Period hipster lace - medium flow
PHPSLC



Period high brief lace - high flow
PHBRLC



Available sizes

S-M-L-XL-XXL

Available colours



Composition

Lace: 90% Polyamide / 10% Elastane

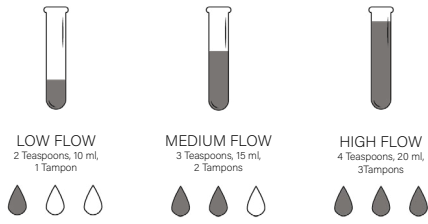
Laminated: 84% Recycled polyamide / 16% Elastane

Care instructions



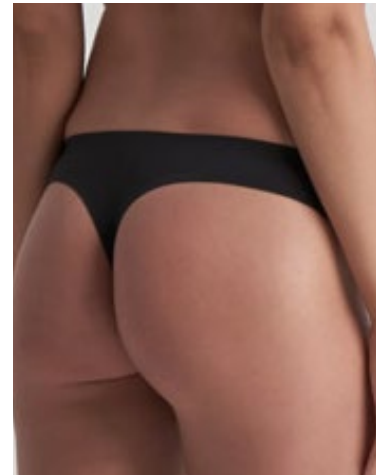
Absorbency Level

Every woman, every need and every period is unique. Our leak-proof underwear is available in multiple sizes and designs from S to XXL. It's suitable for small leaks to very heavy flows. Choose the right absorbency level for your needs.



Sustainable... not once but twice

Leak-proof panties are a sustainable alternative to traditional menstruation and leak-proof products such as tampons. Our laminated panties are made from recycled microfabric. Good for you and the environment.



Period thong laminated - low flow
PRDLT



Period hipster laminated - medium flow
PRDLH



Period high brief laminated - high flow
PRLHB

Leak-proof underwear

	NL,DE& SCANDINAVIE	FR,ES,PT	IT	UK	US
S	36	38	40	10	8
M	38	40	42	12	10
L	40	42	44	14	12
XL	42	44	46	16	14
XXL	44	46	48	18	16

Name - Style code

Black

Boxerstring lace
low flow
PBSTLC



S 2210
M 2211
L 2212
XL 2213
XXL 2214

Period hipster lace
medium flow
PHPSLC



S 2220
M 2221
L 2222
XL 2223
XXL 2224

Period high brief lace
high flow
PHBRLC



S 2230
M 2231
L 2232
XL 2233
XXL 2234

Name - Style code

Black

Period thong laminated
low flow
PRDLT



S 2185
M 2186
L 2187
XL 2188
XXL 2189

Period hipster laminated
medium flow
PRDLH



S 2195
M 2196
L 2197
XL 2198
XXL 2199

Period high brief laminated
high flow
PRLHB



S 2205
M 2206
L 2207
XL 2208
XXL 2209



Model wearing:
Strapless bra - M
Period high brief lace - M

BUM LIFT &
UNDERWEAR



Model wearing:
Strapless bra - M
Padded shorts - M

For everyday use or for a special occasion, our underwear has been developed with a specific functionality in mind.

Our laser cut 2-packs are soft and stretchy, perfect for every day. 4 different models are sold in a two pack with a black and a beige piece. The laser cut finishing makes them invisible and comfortable; a must-have for your wardrobe.



2- Pack thong
2PTHNG
S-M-L-XL-XXL



Model wearing:
Invisible bra top push-up - M
2- Pack brazilian - M



2- Pack brazilian
2PBRAZ
S-M-L-XL-XXL



2- Pack hipster
2PHIPS
S-M-L-XL-XXL



Care instructions



Our padded panties and shorts will make your butt look fuller and rounder. The high waist version will also help you with tummy control.

Expert tip:

With our High Waist Padded Panties you get two products for the price of one. Enhancing your curves on the back side while controlling your tummy on the front.



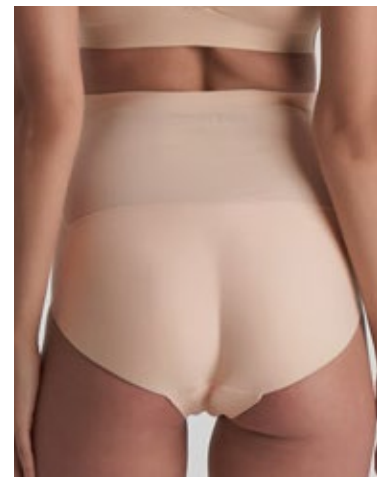
2- Pack high brief
2PHBRF
 S-M-L-XL-XXL



Model wearing:
 Invisible bra top deep plunge - M
 Padded panties high waist - M



Padded panties low waist
PADPTYLW
 S-M-L



Padded panties high waist
PADPTYHW
 S-M-L



Underwear

	NL,DE& SCANDINAVIÉ	FR,ES,PT	IT	UK	US
S	36	38	40	10	8
M	38	40	42	12	10
L	40	42	44	14	12
XL	42	44	46	16	14
XXL	44	46	48	18	16

Did you know padded shorts have removable pads?
You can easily turn them into a regular short, so you have two products in one.

Did you know they are made from recycled microfabric?
They are good for you but also good for the environment.

Not sure about how to avoid visible panty lines? Here is your ultimate NO VPL solution, our Adhesive Thongs.
Available in 4 different variants (beige and black in plain fabric or lace) they are the perfect solution to avoid visible panty lines under a thought dress.



Padded shorts
UNDPDS
S-M-L-XL-XXL



Model wearing:
Invisible bra top deep plunge - M
Padded shorts - M



Adhesive thong
ADTHNG



Adhesive thong lace
ADTHNGLC






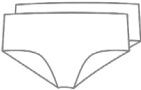
Model wearing:
Strapless bra - M
2- Pack high brief - M

Name - Style code

Beige Black **2-pack**

2- Pack thong 2PTHNG		S	976
		M	977
		L	978
		XL	979
		XXL	1096

2- Pack brazilian 2PBRAZ		S	1052
		M	1053
		L	1054
		XL	1055
		XXL	1098

2- Pack hipster 2PHIPS		S	985
		M	986
		L	987
		XL	988
		XXL	1097

2- Pack high brief 2PHBRF		S	1057
		M	1058
		L	1059
		XL	1060
		XXL	1099

Padded panties low waist PADPTYLW		S	994N	1303
		M	995N	1304
		L	996N	1305

Name - Style code

Beige Black

Padded panties high waist PADPTYHW		S	997N	1306
		M	998N	1307
		L	999N	1308

Padded shorts UNDPDS		S	2150	2155
		M	2151	2156
		L	2152	2157
		XL	2153	2158
		XXL	2154	2159

Adhesive thong ADTHNG		one-size	969N	1070
--------------------------	---	----------	------	------

Adhesive thong lace ADTHNGLC		one-size	1071	970N
---------------------------------	---	----------	------	------



Model wearing:
Strapless bra - M
2- Pack high brief - M

NATURAL
RIB



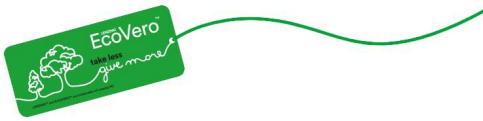
Model wearing:
Natural rib cropped tanktop - M
Natural rib tanga - M

We are proud to say that our newest Underwear line is made of **LENZING™ ECOVERO™** viscose fibres which offers you a more sustainable and eco-friendly fashion choice.

The **LENZING™ ECOVERO™** viscose is derived from sustainable forestry and produced with up to 50% lower CO2 Emissions and water impact.

The rib collection contains 3 tops & 3 bottoms and are all super comfy, breathable and super soft. All styles are made with a silky touch and stretchy elastic in the waist or underbust. On top, we have stitched a nice logo patch.

The line is available in 2 colours and 5 sizes: S-XXL.



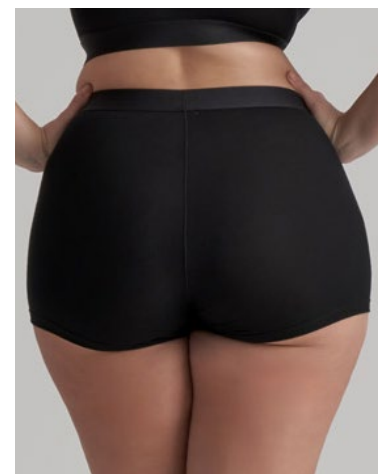
Tanga
NRTNGA



Model wearing:
Natural rib cropped tanktop - M
Natural rib tanga - M



Hip hugger
NRHHUG



Boy short
NRBYSH

Available sizes
S-M-L-XL-XXL

Available colours
○ ●

Composition
95% Viscose (LENZING™ ECOVERO™) / 5% Elastane

Care instructions
🧺 ✂️ 🧺 🧺 🧺

Unique selling points:

- Natural fibers
- LENZING™ ECOVERO™ viscose
- Comfortable underwear

Expert tip:

All our tops are made, with either fixed or removable padding, for the most optimized flexible fit. Also the straps, wing, hook & eye are all graded towards the bigger sizes, to give everything the same perfect fit.

And our boyshort is amazing and relaxing to also wear at night!



Cropped tanktop
NRCRTT



Model wearing:
Natural rib bra top - XL
Natural rib hip hugger - XL



Bra top
NRBRTP



Triangle bra top
NRTRBT

Natural rib

	NL,DE& SCANDINAVIE	FR,ES,PT	IT	UK	US
S	36	38	40	10	8
M	38	40	42	12	10
L	40	42	44	14	12
XL	42	44	46	16	14
XXL	44	46	48	18	16

Name - Style code

White Black

Tanga
NRTNGA



S	1955	1945
M	1956	1946
L	1957	1947
XL	1958	1948
XXL	1959	1949

Hip hugger
NRHHUG



S	1970	1960
M	1971	1961
L	1972	1962
XL	1973	1963
XXL	1974	1964

Boy short
NRBYSH



S	1985	1975
M	1986	1976
L	1987	1977
XL	1988	1978
XXL	1989	1979

Name - Style code

White Black

Cropped tanktop
NRCRTT



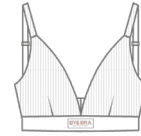
S	1940	1930
M	1941	1931
L	1942	1932
XL	1943	1933
XXL	1944	1934

Bra top
NRBTP



S	1925	1915
M	1926	1916
L	1927	1917
XL	1928	1918
XXL	1929	1919

Triangle bra top
NRTRBT



S	1910	1900
M	1911	1901
L	1912	1902
XL	1913	1903
XXL	1914	1904



Model wearing:
Natural rib triangle bra top - M
Natural rib boy short - M

SHAPING
TIGHTS



Model wearing:
Invisible bra top push-up - M
Total push-up 100 - M

A shaping and push-up edited collection, available in black up to size XL.

Made in Italy to the highest level of quality and attention to details.

Within an essential and curated collection, we can offer you all the functionalities and finishes you may be looking for in a shaping, push and tummy control pair of tights.

We offer a wide range of deniers and shaping effects. From built-in butt lift push-up tights to total shaper tights. Matt or shiny, sheer or opaque. All are extremely soft and comfortable to wear.



Total push-up 100
TTPU100
S-M-L



Model wearing:
Power up 40 - M



Power up 40
PWRU40
S-M-L-XL



Total shaper 100
TSH100
S-M-L

Available colours



Care instructions



Unique selling points:

- 100% made in Italy
- Soft handfeel
- Strong quality
- Hygienic cotton crotch inside

Expert tip:

Our Power up 40 Den tights have it all! Nice design, soft handfeel, great tummy control and amazing push-up of the butt area.



Comfort velvet touch 150
CVT150
 S-M-L



Model wearing:
 Control slim 40 - M

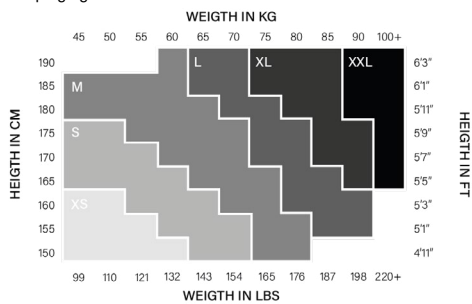


Control slim 40
CTRS40
 S-M-L-XL



Control slim 70
CRTS70
 S-M-L

Shaping tights



Name - Style code

Black

Total push-up 100
TTPU100



S	1835
M	1836
L	1837

Power up 40
PWRU40



S	1840
M	1841
L	1842
XL	1843

Total shaper 100
TSH100



S	1845
M	1846
L	1847

Name - Style code

Black

Comfort velvet touch 150
CVT150



S	1860
M	1861
L	1862

Control slim 40
CTRS40



S	1850
M	1851
L	1852
XL	1853

Control slim 70
CRTS70



S	1855
M	1856
L	1857



Model wearing:
Invisible bra top push-up - M
Total push-up 100 - M

A woman with dark hair pulled back is posing against a light background. She is wearing a black ultra-plunge bra, a black lace high-waist brief, and black thigh bands. Her arms are raised above her head, and she is looking down and to the side.

SPECIAL
SOLUTIONS

Model wearing:
Ultra plunge bra - M
Lacy high waist brief - M
Thigh bands fabric - M

All our solutions are special, but some are more special than others.

This category offers a wide range of products, all here to help you when you need them the most ;)

Our Strapless and Ultra Plunge Bras are a perfect solution if you prefer a more traditional bra over an adhesive solution. One can be totally strapless, while the other will allow you a super deep décolleté both front and back.

Expert tip:

The Ultra Plunge bra is a great piece to have in your closet! It is the ultimate solution to wear deep plunge outfits and maintain a great push-up and firm fit.



Strapless bra
STRBRA
S-M-L-XL-XXL



Model wearing:
Ultra plunge bra - M
Waist control high waist thong - M



Ultra plunge bra
ULPBRA
S-M-L-XL-XXL



High waist nipper
HWNIPP
S-M-L-XL-XXL



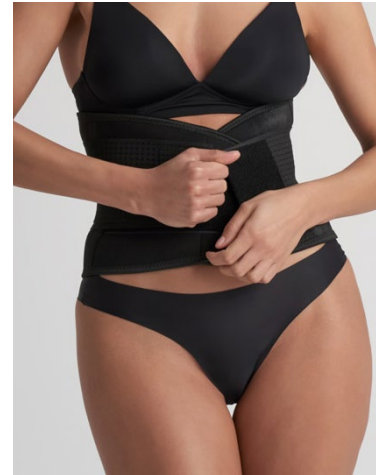
Bra Top

Bra sizing	S	M	L	XL	XXL
Bust	85-90	92-97	99-104	106-111	113-118
Underbust	68-72	73-77	78-82	83-87	88-92
Bra size	70B/70C	75B/75C/70D	75D/80B 80C/85B	80D/85C 85D/90B	90C/90D/95B

Our 3 new waist trainers offer a different kind of waist support and control, so that you can choose the one that is best for you.

All unique pieces, but very important and not to be missed in your wardrobe.

Sometimes the smallest box contains the most amazing surprise. Discover our extensive collection of bra accessories, nipple covers and much more.



Perfect shape waist trainer
PFWSTR
S-M-L-XL-XXL



Model wearing:
Strapless bra - M
Thigh bands lace - M
2-pack thong - M



Perfect shape waist wrap
PFSHWW
one-size



Thigh bands fabric
TGBNDFBR
S-M-L-XL-XXL



Thigh bands lace
TGBNDLC
S-M-L-XL-XXL



Waist Shaper

Bra sizing	S	M	L	XL	XXL
Underbust	68-72	73-77	78-82	83-87	88-92
Waist	68-74	76-82	84-90	92-98	100-106
Hips	89-95	97-103	105-111	113-119	122-128

Would you like to show more volume and cleavage?
Choose one of our push up pads.

Are you worried about them not holding in place in your
bra? Then choose one of the adhesive versions.

Do you need one for your swimwear? Pick a silicone one,
so that it will not get wet.

Looking for a more natural feeling and for multiple sizes?
Then the Mineral oil push ups are the right product for
you.



Mineral oil push-up pads
MOLPUP
AB-C/D



Adhesive half push-up pads
ADHPUP
one-size



Model wearing:
Adhesive half push-up pads
Sculpting wire free bra - M



Adhesive bikini push-up pads
ADBPUP
one-size



Waterproof bikini push-up pads
WPBPUP
one-size



Waterproof half push-up pads
WPHPUP
one-size



If you are looking for a conceiving solution, you are in the right place. We have plenty of shapes (flower and round), materials (fabric, silicone and matt silicone), sizes (M, XL, XXL) and colors (beige and brown) to choose from.

Not to forget you can also choose between adhesive and non-adhesive nipple covers.

We launched last year our first adhesive free nipple cover in beige M. It was such a success that we now also have it available in XL and XXL. Endlessly reusable and indestructible is a basic must have...



Satin nipple covers
STNNCV
M-XL



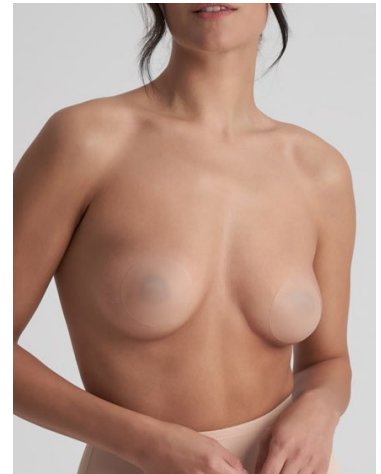
Fabric nipple covers
FBRNCV
one-size



Model wearing:
Adhesive free nipple covers - M
Sculpting mid waist brief - M



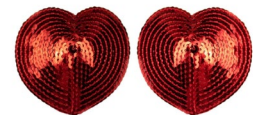
Silicone nipple covers
SILNCV
M-XL



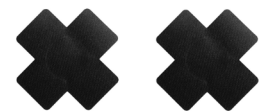
Adhesive free nipple covers
ADHVFNP
M-XL-XXL



Matt silicone nipple covers
MTSLNC
M-XL-XXL



Heart nipple covers
HNIPC
one-size



X nipple covers
XNIPC
one-size



Loving your bra and looking for a solution to lower it on the back or make it fit better? No worries we have the solution for you.

Our low back straps and extenders are available in multiple colors and materials with 2 and 3 hooks. Old fashion simple solutions can some time still be the most effective ones...



3-pack low back straps
LWBS2H
2 hook
●



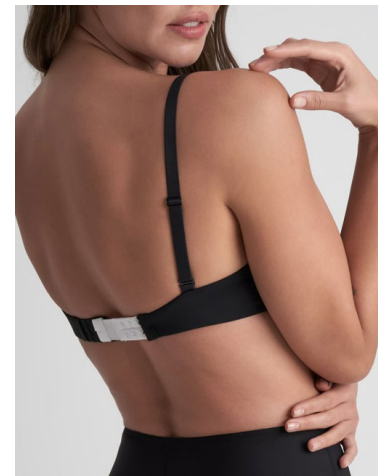
3-pack low back straps
LWBS3H
3 hook
●



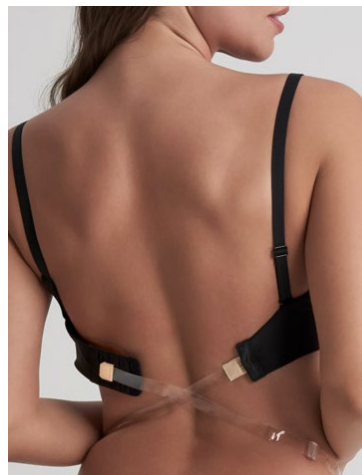
Model wearing:
Strapless bra - M
Low back straps
2-pack hipster - M



3-pack bra extenders
BREX2H
2 hook
●



3-pack bra extenders
BREX3H
3 hook
●



Transparent low back straps
TRLWBS
one-size
○



Transparent bra straps
TRBRAS
10mm-15mm
○

More tricks up your sleeves... All the way to your shoulders.

Shoulder pads are never out of fashion. Cushion straps pads distribute the pressure of your bra strap across a wider surface, avoiding that uncomfortable cutting feeling



Shoulder bra pads
SHLPAD
one-size
● ●



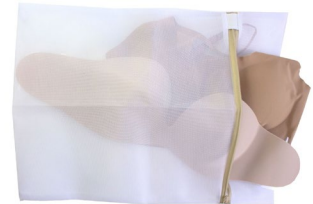
Cushion strap pads
SAHPAD
one-size
○



Model wearing:
Shoulder bra pads
Invisible bra top pus-up - M
2-pack thong - M



Bra clips
BRACLP
one-size
●



Washing bag
WHSBAG
one-size
○

Name - Style code

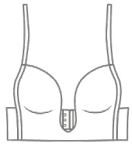
Beige Black

Strapless bra
STRBRA



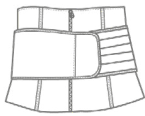
S	1585	1590
M	1586	1591
L	1587	1592
XL	1588	1593
XXL	1589	1594

Ultra plunge bra
ULPBRA



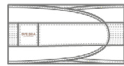
S	2170	2175
M	2171	2176
L	2172	2177
XL	2173	2178
XXL	2174	2179

High waist nipper
HWNIPP



S	2305
M	2306
L	2307
XL	2308
XXL	2309

Perfect shape waist trainer
PFWSTR



S	2300
M	2301
L	2302
XL	2303
XXL	2304

Perfect shape waist wrap
PFSHWW



one-size	2310
----------	------

Thigh bands fabric
TGHBNDFBR



S	1073	1074
M	1010	1014
L	1011	1015
XL	1012	1016
XXL	1013	1017

Thigh bands lace
TGHBNDLC



S	1061	1072
M	1062	1066
L	1063	1067
XL	1064	1068
XXL	1065	1069

Mineral oil push-up pads
MOLPUP



A/B	1000
C/D	1001

Adhesive half push-up pads
ADHPUP



one-size	917N
----------	------

Adhesive bikini push-up pads
ADBPUP



one-size	912N
----------	------

Waterproof bikini push-up pads
WPBPUP



one-size	932N
----------	------

Waterproof half push-up pads
WPHPUP



one-size	901N
----------	------

Name - Style code

Satin nipple covers
STNNCV



M	9353N	99353N
XL	9360N	99358N

Fabric nipple covers
FBRNCV



one-size	9378N	99357N
----------	-------	--------

Silicone nipple covers
SILNCV



New size added XXL

M	931N	1075
XL	915N	-

Adhesive free nipple covers
ADHVFNP



New size added XXL

M	1076
XL	1191
XXL	1192

Matt silicone nipple covers
MTSLNC



New style

M	1002
XL	1003
XXL	1004

X nipple covers
XNIPCV



one-size	1007N
----------	-------

Heart nipple covers
HNIPCV



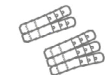
one-size	1006N
----------	-------

3-pack low back straps
LWBS2H + LWBS3H



2-hook	1301
3-hook	1302

3-pack bra extenders
BREX2H + BREX3H



2-hook	1019
3-hook	1020

Transparent low back straps
TRLWBS



one-size	933N
----------	------

Transparent bra straps
TRBRAS



10mm	928N
15mm	828

Shoulder bra pads
SHLPAD



one-size	942	943
----------	-----	-----

Cushion strap pads
SAHPAD



one-size	929N
----------	------

Bra clips
BRACLP



one-size	1300
----------	------

Washing bag
WHSBAG



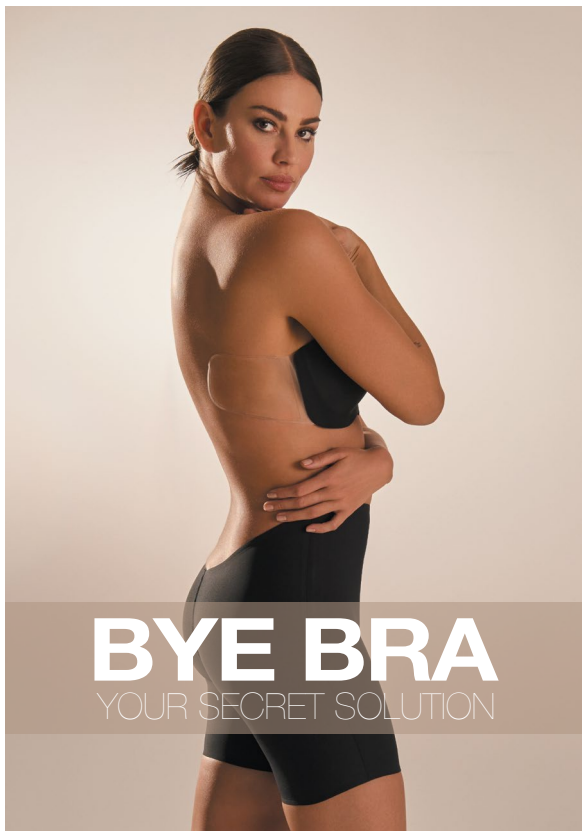
one-size	930N
----------	------

We have plenty of marketing material available both digital and physical. Log in into our B2B platform to explore our entire collection and stay always up to date with Bye Bra.

Use this URL <https://shop.app4sales.net/ByebraB2B/> or simply scan this QR code to access



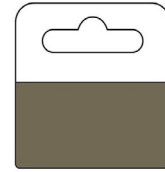
You will be able to explore our collection, look book, digital catalogue. You can place orders independently with real time stock availability. You can download campaign and ecommerce photos and videos and much more.



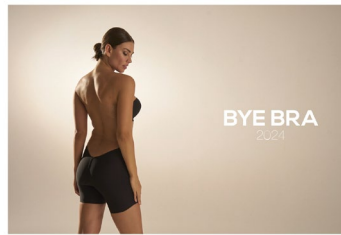
If you need any assistance please do not hesitate to contact us at info@byebra.com or via the phone on +31 (0) 10 890 6558



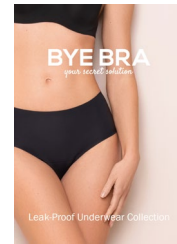
Hanger
32007



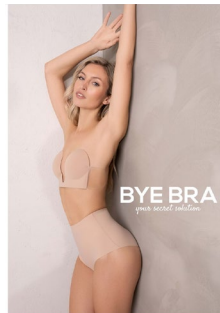
Eurolock sticker
32015



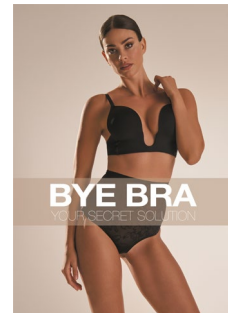
Bye Bra 2024 catalogue
32006



Bye Bra period panties brochure
32012



Bye Bra poster 2023
32011



Window sign
32010



Canvas bag
32008



Luxury paper bag
32009



Counter display
32013



Floor display
32014

YOUR SECRET SOLUTION

BYE BRA